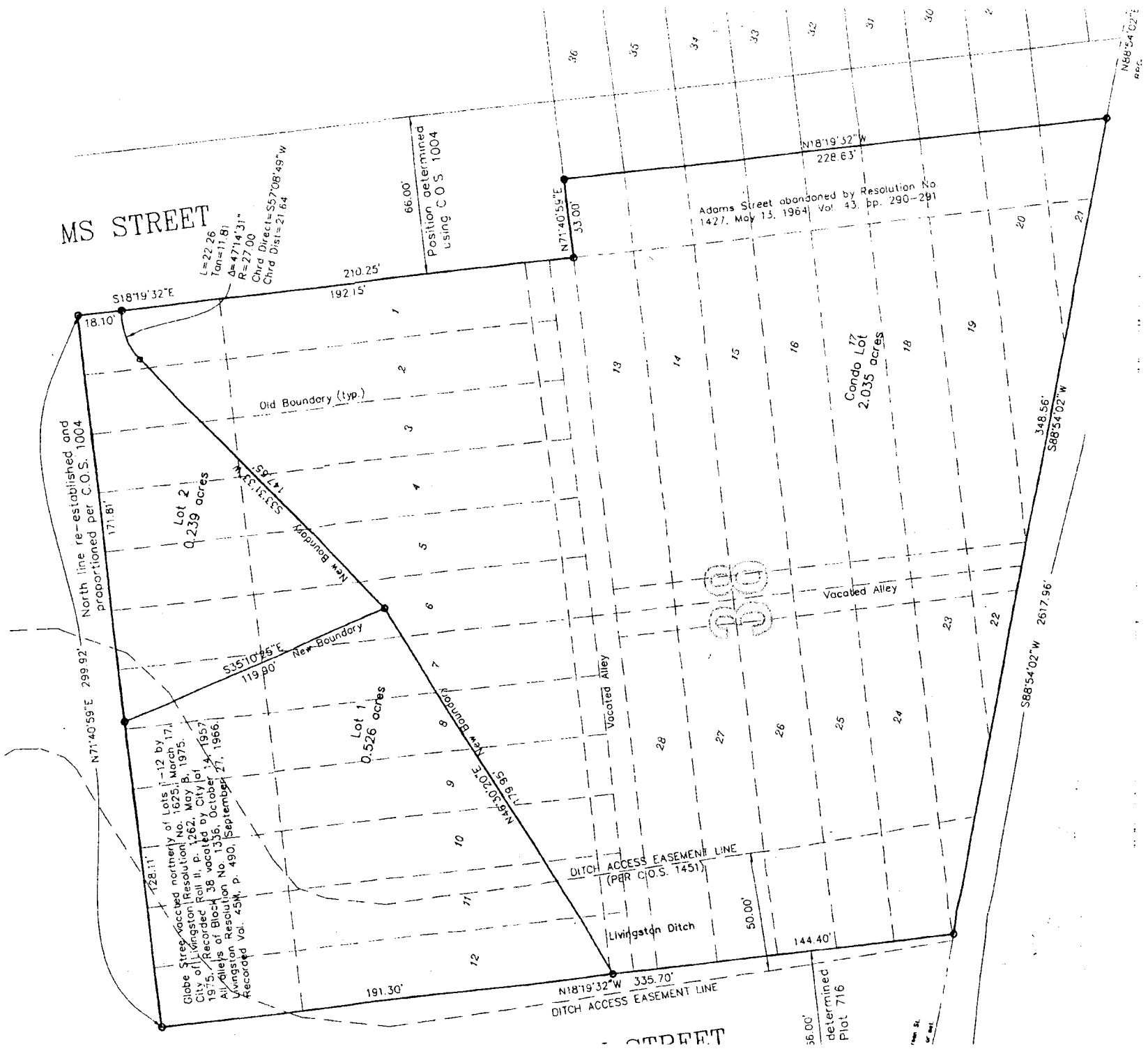


MS STREET



North line re-established and proportioned per C.O.S. 1004

Globe Street vacated northerly of Lots 1-12 by City of Livingston Resolution No. 1625, March 17, 1975. Recorded Roll II, p. 1262, May 8, 1975. Alley of Block 38 vacated by City of Livingston Resolution No. 1336, October 14, 1957. Recorded Vol. 45M, p. 490, September 27, 1966.

$L=22.26$
 $Tan \alpha = 11.81$
 $\Delta = 47' 14.31''$
 $R = 27.00$
 Chrd Direct = $S57^{\circ}08'49'' W$
 Chrd Dist = 21.64

Position determined using C.O.S. 1004

Adams Street abandoned by Resolution No. 1427, May 13, 1964, Vol. 43, pp. 290-291

Condo Lot
2.035 acres

DITCH ACCESS EASEMENT LINE
(PER C.O.S. 1451)

Livingston Ditch

DITCH ACCESS EASEMENT LINE

determined Plot 716

SECRET

N68°54'02"W
Per.